

New Product Announcement

Panoptix LiveScope™ System

Clearly, Panoptix LiveScope is the most amazing sonar technology ever. It's live, real-time scanning sonar. See easy-to-interpret live scanning sonar images of structure, bait and fish swimming all around your boat, even when your boat is stationary. Easily adjust the transducer to fit your fishing techniques; point forward to see around your boat, or point down to see directly below your boat. The view automatically updates on your Garmin chartplotter.



KEY FEATURES:

NEW LIVESCOPE	See highly detailed, easy-to-interpret live scanning sonar images of structure, bait and fish swimming below and around your boat in real time, even when your boat is stationary.
NEW EASY TO CHANGE VIEWS	Easily adjust the transducer to fit your fishing techniques; point forward to see around your boat, or point down to see directly below your boat and your chartplotter will automatically update the view.
NEW MAXIMUM RANGE	LiveScope Down and LiveScope Forward modes offer ranges up to 200'.
STABILITY	Attitude Heading Reference System (AHRS) stabilizes sonar view on chartplotter screen, even in rough conditions.
EASY TO INSTALL	Simple plug-and-play Garmin Marine Network connector makes it easy to install and seamlessly integrate with your compatible Garmin chartplotter ¹ .
IN THE BOX	Includes GLS 10 sonar black box, LVS32 transducer with both transom and trolling motor mounts, power cable, network cable, adapter cable and documentation.
¹COMPATIBILITY	Compatible with GPSMAP® 8400 series MFDs, GPSMAP 7400, 1022/1222, GPSMAP 1222/1222xsv Touch and 722/922 series chartplotters and ECHOMAP™ Plus 72cv/72sv and 92sv chartplotter/sonar combo series.

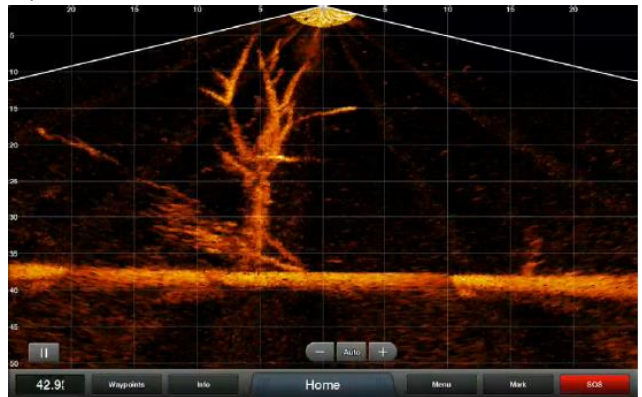
LIVEVÜ FORWARD

This screenshot is looking at fish located by a tree about 10' away. The transducer is located in the top left of the screenshot.



LIVEVÜ DOWN

This screenshot shows a tree. The transducer is located in the top centre of the screenshot.



MOUNTING STYLES:

Trolling Motor Barrel Mount



Trolling Motor Shaft Mount



Transom Mount



PRODUCT CONFIGURATION:

Description	Part number	UPC	RRP EUR
Panoptix LiveScope™ System	010-01864-00	753759182724	€1999

Includes: GLS 10 sonar black box, Panoptix LVS32 transducer, transom mount, trolling motor barrel mount, trolling motor shaft mount, power cable, network cable, adapter cable and documentation.

PHYSICAL SPECIFICATIONS:

Physical dimensions (L x H x W):	GLS 10 sonar black box: 24.5 x 14.9 x 6.5 cm LVS32 transducer: 13.7 x 9.7 x 4.6 cm
Weight:	GLS 10 sonar black box: 2.0 kg LVS32 transducer: 0.9 kg
Temperature range:	Operating: -15°C to 70°C Non-operating: -40°C to 85°C
Frequencies supported:	530 kHz - 1.1 mHz
Maximum range (down and forward):	61.0 m
Power consumption:	21 W typical, 58 W max
Voltage range:	10-32 V
Gift box dimensions:	23.3 x 17.4 x 17.2 cm
Gift box weight:	4.3 kg
Case pack:	4 per carton
Master carton dimensions:	48.3 x 35.7 x 19.5 cm
Master carton weight:	1.6 kg

COMPATIBLE ACCESSORY OVERVIEW:

	Part Number	UPC	RRP EUR
SHAFT MOUNT NEW	010-12784-01	753759207823	€29.99
Replacement trolling motor shaft mount for the Panoptix LVS32 transducer.			
BARREL MOUNT NEW	010-12784-00	753759207816	€29.99
Replacement trolling motor barrel mount for the Panoptix LVS32 transducer.			
TRANSOM MOUNT NEW	010-12784-02	753759207830	€34.99
Replacement transom mount for the Panoptix LVS32 transducer.			
LVS32 TRANSDUCER REPLACEMENT NEW	010-12784-03	753759208806	€1,249
Replacement LVS32 transducer. This does not include any mounts.			

For more information on compatible accessories, please visit the product page at [Garmin.com](https://www.garmin.com).